

PART OF THE NW. 1/4, OF SECTION 23, T.5N., R.1W., S.L.B. & M.

782

COMBE SUBDIVISION NO. 3

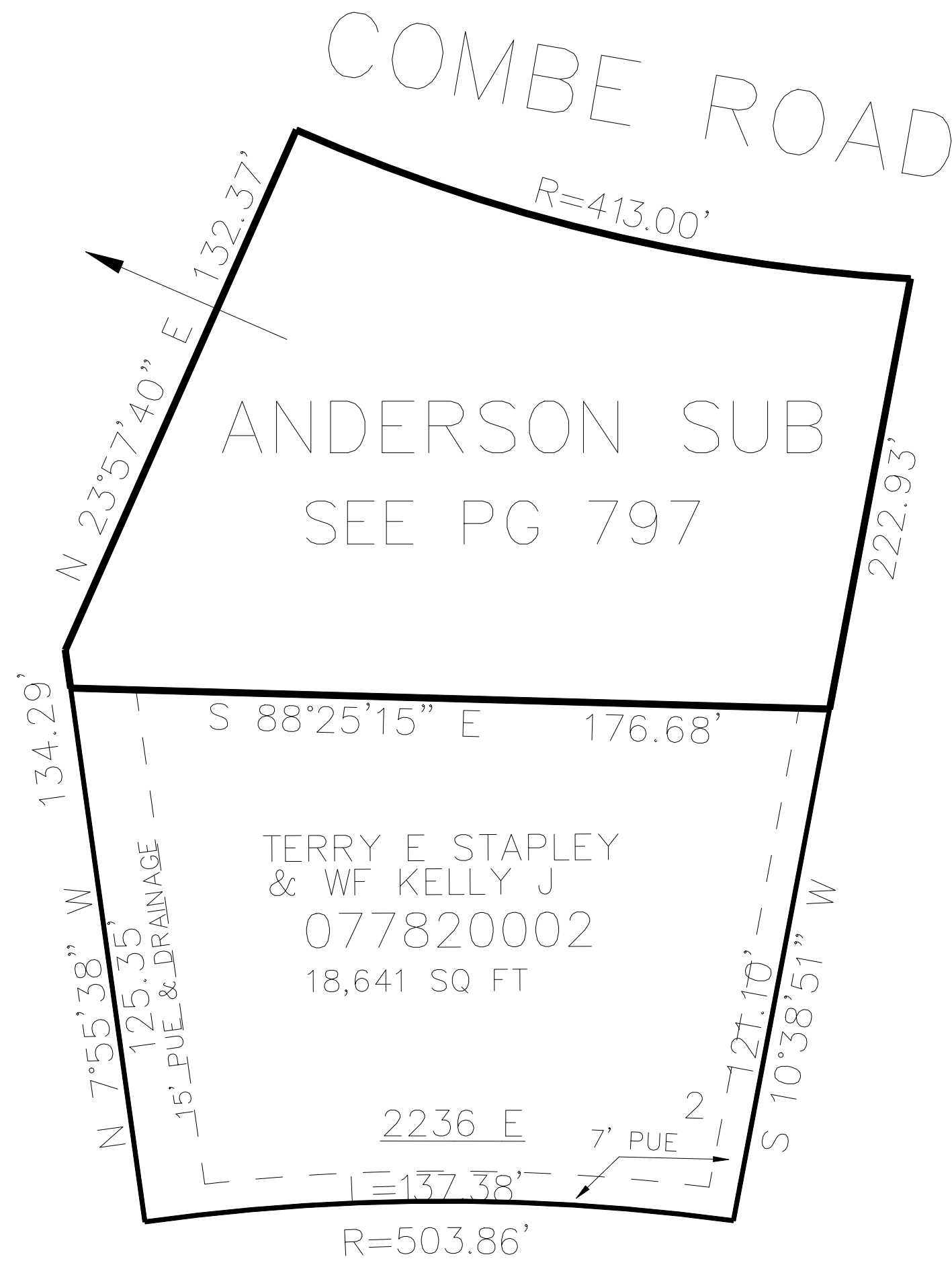
IN WEBER COUNTY

TAXING UNIT: 159

SCALE 1" = 30'

SEE PAGE 748

SEE PAGE 340



10' UTILITY & DRAINAGE EASEMENTS EACH
SIDE OF PROPERTY LINES AS INDICATED
BY DASHED LINES EXCEPT AS OTHERWISE
SHOWN.

FOR COMPLETE ENG DATA SEE
ORIGINAL DEDICATION PLAT IN
BOOK 81, PAGE 48 OF RECORDS.